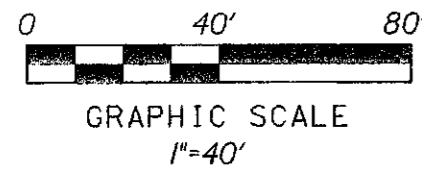
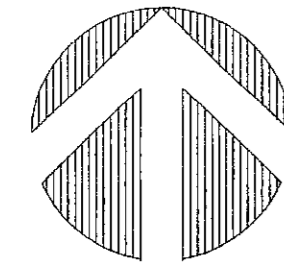


PERIMETER

SURVEYING & MAPPING
Certificate of Authorization No. LB7264
Prepared by: Jeff S. Hodapp, P.S.M.
951 Broken Sound Parkway, Suite 320
Boca Raton, Florida 33487
Tel: (561) 241-9988
Fax: (561) 241-5182



PALOMA, P.U.D.

A PORTION OF THE WEST ONE-HALF OF SECTION 36, TOWNSHIP 41 SOUTH,
RANGE 42 EAST, AND A PORTION OF THE NORTHWEST ONE-QUARTER OF
SECTION 1, TOWNSHIP 42 SOUTH, RANGE 42 EAST, PALM BEACH GARDENS,
PALM BEACH COUNTY, FLORIDA.

JULY, 2006

156

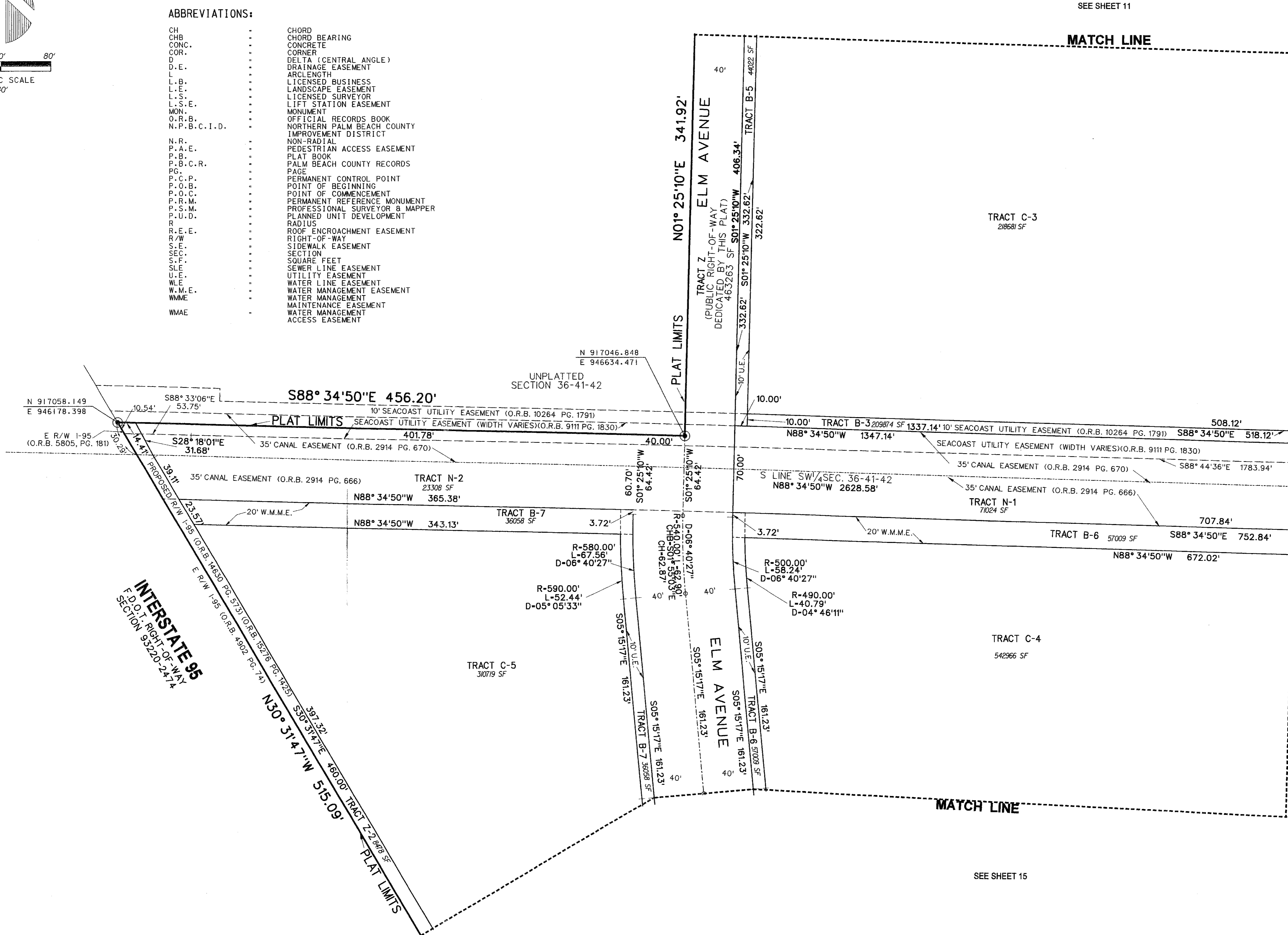
SHEET 13 OF 16

LEGEND:

- ⊙ SET P.R.M. (UNLESS OTHERWISE NOTED)-4" X4" CONC. MON. WITH ALUMINUM DISK STAMPED P.R.M.-LB7264
- SET P.C.P.-LB7264
- ⊙ CENTERLINE

ABBREVIATIONS:

- CH CHORD
- CHB CHORD BEARING
- CONC. CONCRETE
- COR. CORNER
- D DELTA (CENTRAL ANGLE)
- D.E. DRAINAGE EASEMENT
- L LENGTH
- L.B. LICENSED BUSINESS
- L.E. LANDSCAPE EASEMENT
- L.S. LICENSED SURVEYOR
- L.S.E. LIFT STATION EASEMENT
- MON. MONUMENT
- O.R.B. OFFICIAL RECORDS BOOK
- N.P.B.C.I.D. NORTHERN PALM BEACH COUNTY IMPROVEMENT DISTRICT
- N.R. NON-RADIAL
- P.A.E. PEDESTRIAN ACCESS EASEMENT
- P.B. PLAT BOOK
- P.B.C.R. PALM BEACH COUNTY RECORDS
- PG. PAGE
- P.C.P. PERMANENT CONTROL POINT
- P.O.B. POINT OF BEGINNING
- P.O.C. POINT OF COMMENCEMENT
- P.R.M. PERMANENT REFERENCE MONUMENT
- P.S.M. PROFESSIONAL SURVEYOR & MAPPER
- P.U.D. PLANNED UNIT DEVELOPMENT
- R. RADIUS
- R.E.E. ROOF ENCROACHMENT EASEMENT
- R/W. RIGHT-OF-WAY
- S.E. SIDEWALK EASEMENT
- SEC. SECTION
- S.F. SQUARE FEET
- SLE SEWER LINE EASEMENT
- U.E. UTILITY EASEMENT
- W.L.E. WATER LINE EASEMENT
- W.M.E. WATER MANAGEMENT EASEMENT
- WM.E. WATER MANAGEMENT MAINTENANCE EASEMENT
- WMAE WATER MANAGEMENT ACCESS EASEMENT

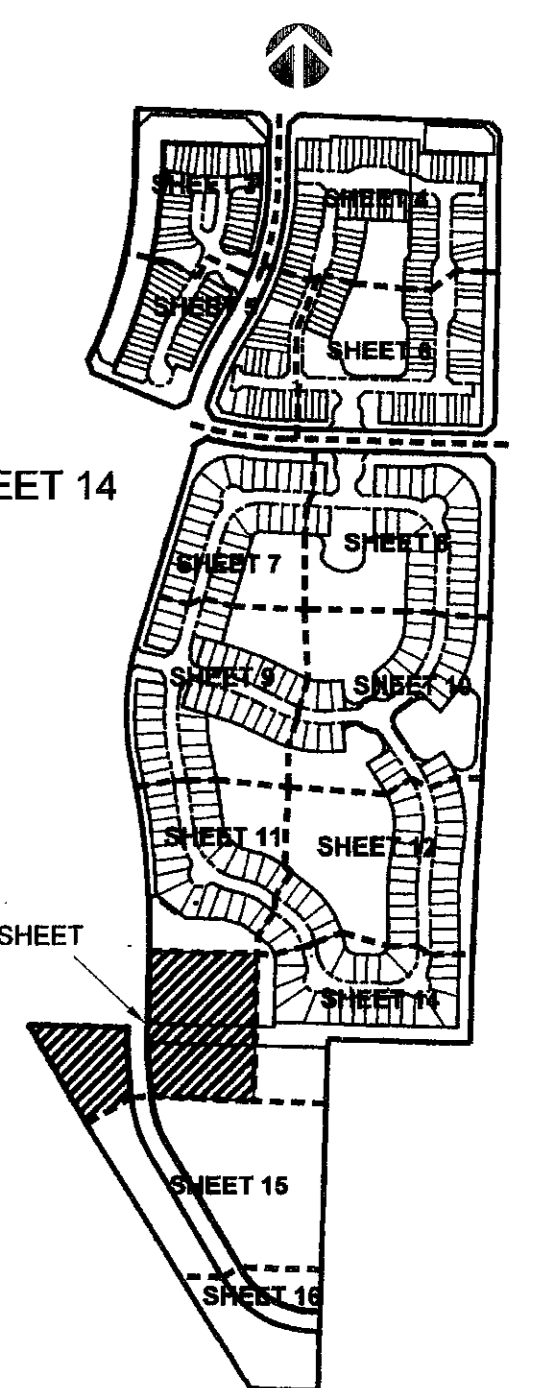


SEE SHEET 11

MATCH LINE

MATCH LINE

SEE SHEET 14



KEY MAP
(NOT TO SCALE)

SEE SHEET 15

INTERSTATE 95
F.D.O.T. RIGHT-OF-WAY
SECTION 93220-2474

N30° 31' 47" W 515.09'